



**IESNA
SUSTAINING
MEMBER**



Test Report Number:	LCZP14070097	Total Pages: 7
Applicant Name:	L-TECH CORPORATION	
Applicant Address:	SHAOGANGTOU DISTRICT,QIAOTOU TOWN,DONGGUAN CITY.GUANGDONG PROVINCE,CHINA	
Test item:	LED Downlight	
Model / Type Reference:	LRKT565-9040	
Date of Issue:	2014-07-16	
Testing Laboratory:	LCTECH (Zhongshan) Testing Service Co.,Ltd 2/F.,Technology and Enterprise Development Center, Guangyuan Road, Xiaolan, Zhongshan, Guangdong, China	
Test Specification:	Photometric test (According to IES LM-79-08)	
Test Result:	See following pages	
Compiled by:	Reviewed by:	
2014-07-16	Lin Qiu	2014-07-16
		Richard Li
_____	_____	_____
Date	Name	Signature
		Date
		Name
		Signature
Remark:	N/A	
<p>The duplication of this report or parts of it and its use for advertising purposes is only allowed with permission of the testing laboratory. This report contains the result of the examination of the product sample submitted by the applicant. A general statement concerning the quality of the products from the series manufacture cannot be derived therefore.</p>		

DESCRIPTION INFORMATION (From Photometric File)

IESNA:LM-63-1995
[TEST] LCZP14070097
[DATE] 2014-7-14
[MANUFAC] L-TECH CORPORATION
[LUMCAT] LRKT565-9040
[LUMINAIRE] LED Downlight
[LAMPCAT] LED
[LAMP] LED
[OTHER] ELECTRICAL VALUES:120.02VAC 0.137A 13.29W 0.811

CHARACTERISTICS

Total Luminaire Lumens	1077.31
Luminaire Efficacy	81
Total Luminaire Watts	13
CIE Type	Direct
Spacing Criteria (0-180)	1.18
Spacing Criteria (90-270)	1.18
Spacing Criteria (Diagonal)	1.28
Basic Luminous Shape	Circular
Luminous Length (0-180)	0.08 m (Diameter)
Luminous Width (90-270)	0.08 m (Diameter)
Luminous Height	0.00 m

LUMINANCE DATA (cd/sq.m)

Angle In Degrees	Average 0-Deg	Average 45-Deg	Average 90-Deg
45	76092	75997	76240
55	65739	65472	65884
65	52780	53027	53245
75	37947	38141	38270
85	16513	17089	17089



	<u>0</u>	<u>15</u>	<u>30</u>	<u>45</u>	<u>60</u>	<u>75</u>	<u>90</u>
0	456.47	456.47	456.47	456.47	456.47	456.47	456.47
5	452.88	452.89	452.65	453.14	452.51	452.72	453.52
10	444.62	443.70	444.06	443.95	443.64	444.05	445.79
15	429.27	429.48	430.42	429.79	429.84	429.54	431.19
20	410.30	411.10	410.74	410.24	410.11	410.84	412.15
25	386.75	386.58	386.31	386.54	386.23	386.17	388.23
30	358.39	358.91	358.23	358.58	358.70	359.01	359.78
35	327.92	327.21	327.30	327.45	326.85	327.13	328.35
40	293.12	292.85	293.33	293.35	292.94	293.63	294.34
45	257.21	256.75	257.19	256.89	257.03	257.02	257.71
50	218.30	218.39	218.57	218.71	218.84	218.62	219.40
55	180.25	179.94	180.17	179.52	179.83	180.01	180.65
60	142.15	142.19	142.07	142.16	142.08	141.83	142.77
65	106.63	107.02	106.89	107.13	107.47	106.94	107.57
70	75.17	75.13	75.15	75.23	75.32	75.05	75.59
75	46.95	46.88	46.92	47.19	47.13	47.04	47.35
80	23.25	23.47	23.44	23.34	23.71	23.72	23.67
85	6.88	6.95	6.97	7.12	7.09	7.05	7.12
90	0.38	0.34	0.45	0.63	0.76	0.85	0.69
95	0.36	0.37	0.38	0.38	0.38	0.40	0.36
100	0.40	0.38	0.40	0.39	0.35	0.38	0.40
105	0.41	0.42	0.41	0.41	0.41	0.42	0.41
110	0.45	0.40	0.45	0.43	0.43	0.42	0.43
115	0.45	0.43	0.44	0.44	0.43	0.44	0.43
120	0.48	0.45	0.46	0.44	0.44	0.45	0.43
125	0.50	0.49	0.48	0.48	0.48	0.46	0.48
130	0.52	0.51	0.52	0.52	0.52	0.51	0.46
135	0.46	0.52	0.47	0.50	0.51	0.51	0.48
140	0.53	0.53	0.54	0.52	0.53	0.52	0.53
145	0.62	0.64	0.64	0.63	0.63	0.62	0.60
150	0.76	0.78	0.77	0.82	0.79	0.78	0.76
155	0.96	0.94	0.96	0.97	0.95	0.94	0.94
160	1.20	1.22	1.19	1.23	1.20	1.22	1.17
165	1.46	1.47	1.48	1.44	1.47	1.47	1.44
170	1.65	1.62	1.65	1.64	1.66	1.66	1.62
175	1.68	1.73	1.70	1.74	1.72	1.72	1.74
180	1.77	1.77	1.77	1.77	1.77	1.77	1.77



Zone	Lumens	%Lamp	%Fixt
0-30	342.02	31.7	31.7
0-40	546.6	50.7	50.7
0-60	905.77	84.1	84.1
0-90	1073.74	99.7	99.7
90-120	1.34	.1	.1
90-130	1.77	.2	.2
90-150	2.57	.2	.2
90-180	3.58	.3	.3
0-180	1077.32	100	100

Total Luminaire Efficiency = 100%

ZONAL LUMEN SUMMARY

Zone	Lumens
0-10	42.96
10-20	121.12
20-30	177.94
30-40	204.58
40-50	198.03
50-60	161.14
60-70	106.75
70-80	50.84
80-90	10.39
90-100	.47
100-110	.43
110-120	.43
120-130	.43
130-140	.39
140-150	.4
150-160	.45
160-170	.4
170-180	.16

Note: The luminaire was LED luminaire, the luminaire lumens was also considered as bare lamp lumens.

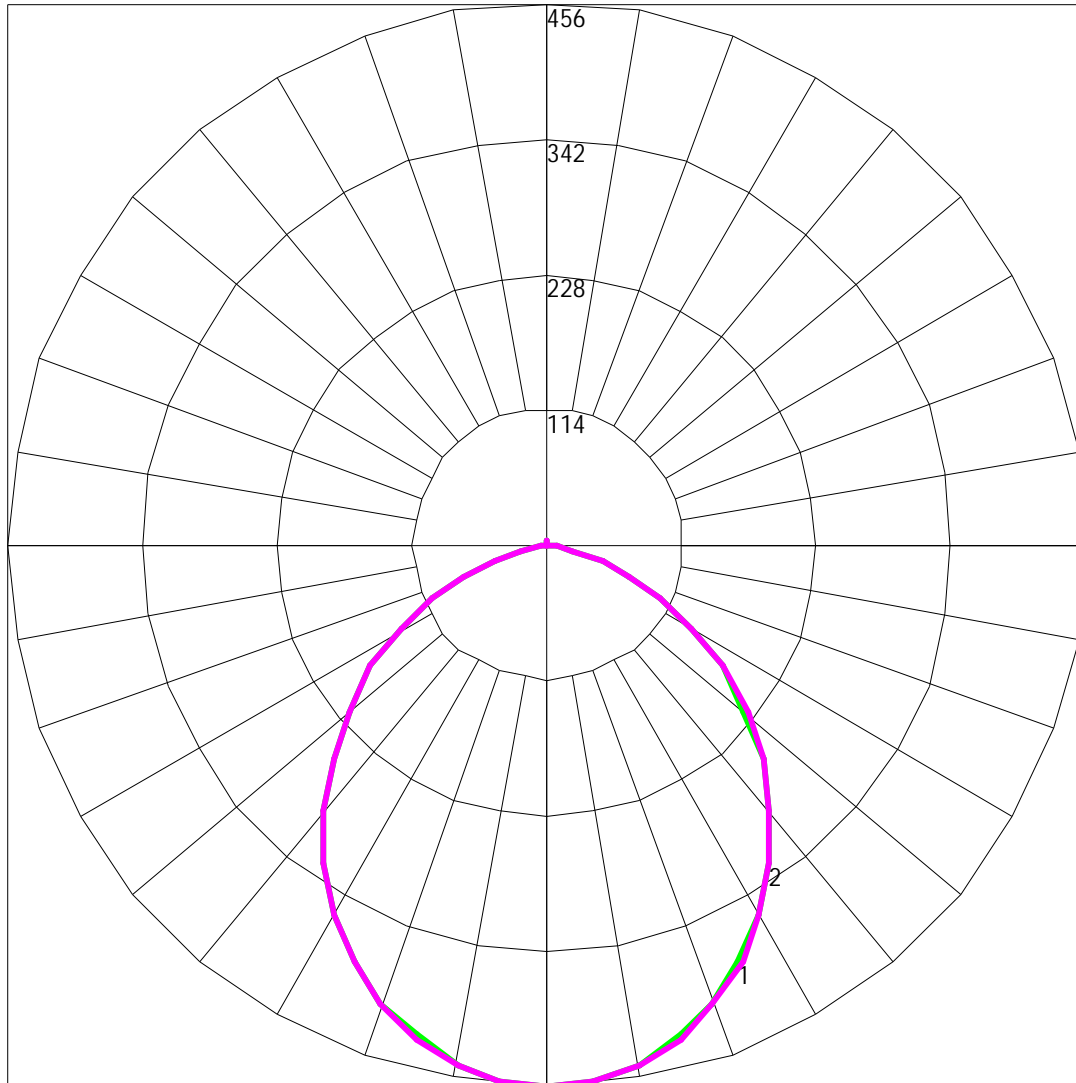


COEFFICIENTS OF UTILIZATION - ZONAL CAVITY METHOD

Effective Floor Cavity Reflectance 0.20

RC	80				70				50			30			10			0	
	RW	70	50	30	10	70	50	30	10	50	30	10	50	30	10	50	30	10	0
0	119	119	119	119	119	116	116	116	116	111	111	111	106	106	106	102	102	102	100
1	110	105	102	98	98	107	103	100	96	99	96	93	95	93	90	91	89	88	86
2	101	93	87	81	81	98	91	85	80	87	83	78	84	80	77	81	78	75	73
3	92	82	75	69	69	90	81	74	68	78	72	67	75	70	66	72	68	64	62
4	85	73	65	59	59	82	72	64	58	70	63	58	67	61	57	65	60	56	54
5	78	66	57	51	51	76	65	57	51	63	56	50	61	55	50	59	53	49	47
6	72	60	51	45	45	71	59	51	45	57	50	44	55	49	44	54	48	44	42
7	67	54	46	40	40	66	53	45	40	52	45	40	50	44	39	49	43	39	37
8	63	50	41	36	36	61	49	41	36	48	41	36	46	40	35	45	39	35	33
9	59	46	38	32	32	57	45	38	32	44	37	32	43	37	32	42	36	32	30
10	55	42	35	30	30	54	42	34	29	41	34	29	40	34	29	39	33	29	27

Note: The luminaire was LED luminaire, the luminaire lumens was also considered as bare lamp lumens.

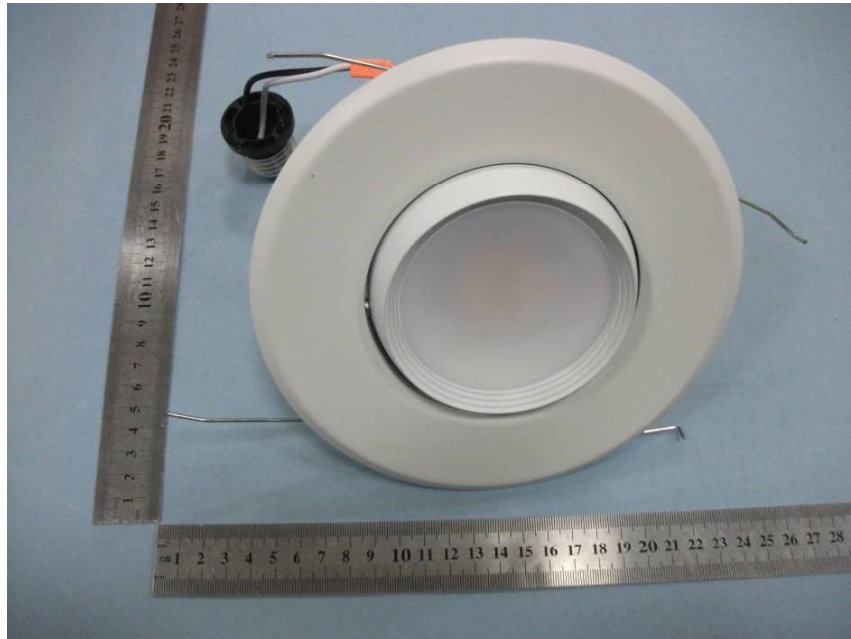


Maximum Candela = 456.47 Located At Horizontal Angle = 0, Vertical Angle = 0

1 - Vertical Plane Through Horizontal Angles (0 - 180)

2 - Vertical Plane Through Horizontal Angles (90 - 270)

Photo of sample



Picture 1 Front View



Picture 2 Back View

--End of test report--